



FORD RESPONDER FEATURED EQUIPMENT



**SETINA**

PUSHING INNOVATION FORWARD

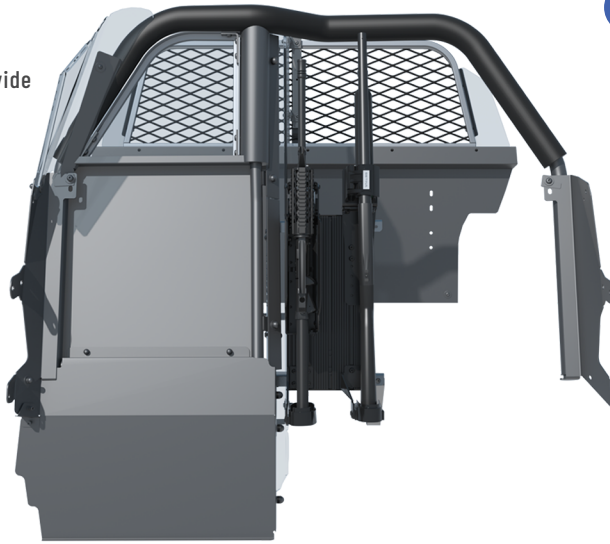
# THE TOTAL LAW ENFORCEMENT

## 3 Single Prisoner Transport Space Saving Designs

Single Prisoner Transport Systems provide a secure area to hold the detainee and maximize Officer Comfort. Only Setina Single Transport units retain the full roll bar-type framework design for structural integrity, Variety Optional Firearm mounts.

### #12VS Rear Cargo Partition

Available with coated, Scratch-Resistant Polycarbonate or Expanded Metal.



## 4 Setina's "SmartBelt" System

When the belt is Buckled, the seat belt retractor is Electronically Locked in "Retract-Only" Mode. When the belt is Un-Buckled, the warning Light Activates.



## 1 Setina Bike Rack Maximizes Your Push Bumper Capabilities

The Police Bike Rack with its unique design is the latest in extendable options for Setina Push Bumper's bike transport. Quick Easy Mounting, Removal and Storage, and is Adjustable for Multiple Bikes.



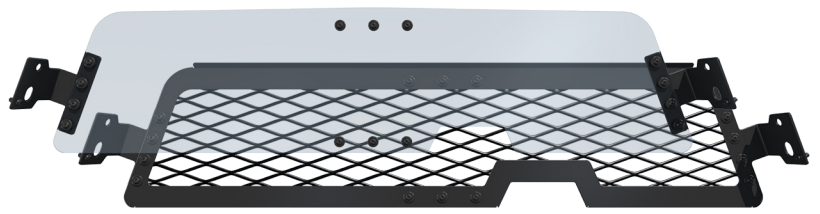
## 2

### Proven Value and Performance In Push Bumpers

From our styled Original, Heavy Duty with our latest technology in "LED"s, our Superior Push Bumper Designs ensure Durability and Performance in the most extreme condition.



# TRANSPORT TRUCK SOLUTIONS PACK



## 6 Defining New Standards for Rear Window Security and Visability

Setina's Rear Window Guards come with Heavy duty black power coated steel and aluminum construction, with radius corners that eliminate abrupt edges.

## 5 Trans-Max Transport & Interior Cargo Storage for Trucks

Setina Trans Max with a Polycarbonate Divider Wall for Single Prisoner Transport. Includes A Heavy-Duty Pull-Out Cargo Drawer with Upper Storage Deck System, and Integrated Radio and Electronics.



## 7 Window Barriers and Door Guards

Setina's® TPO Door Guards are the next generation of interior door protection. Window barriers are scratch-resistant polycarbonate or steel to fit your department's vehicle needs.

**8 Setina OEM Single Prisoner Seating**  
Professionally Engineered to provide Maximum Rear Passenger Legroom, as well as Easier Prisoner Loading and Unloading. Available with our Advanced, Center-Pull System or our Newest Electronic "SmartBelt" System.



## 9

## Freestanding or Partition Mounted Firearms Systems

Available with Single or Double T-Rail firearms mounting options, as well as with multiple lock configurations.



# FORD F-150 RESPONDER FEATURED EQUIPMENT



## Recommended Equipment

### PUSH BUMPER

BK0534FDT21F150	PB400	Aluminum Push Bumper ( <b>Without LED Lights</b> )
	PB450L2	2 LED Light Push Bumper - ( <i>Not Shown</i> )
	PB450L4	4 LED Light Push Bumper

**Lighting Options:** Whelen, SoundOff, Federal Signal

### P.I.T. IMPACT RESISTANT FENDER PROTECTORS

FK0402FDT21F150 PB-9 Double Bar Impact Resistant Aluminum Fender Protector System

### HEADLIGHTS GUARDS WITH P.I.T. IMPACT RESISTANT FENDER PROTECTORS

HK2273FDT21F150 PB-10 Steel Headlight Guards with PB-9 Double Bar P.I.T. Aluminum Fender Protector System

### HEADLIGHTS GUARD SYSTEM

HK0809FDT21F150 PB-8 Steel Headlight Guard System

### DUAL VERTICAL FIREARMS MOUNTING SYSTEMS – #2 and Handcuff Key available for override

GK10141S1U	VaultLock and Small Shotgun Lock (#2 Key) - ( <i>Not Shown</i> )
GK10301S1U	Handcuff Style Universal AR and Small Shotgun Lock (#2 Key)
GK11191B1S	Blac-Rac Tactical Lock and Small Shotgun Lock - ( <i>Not Shown</i> )
GF1382FDT15F150	T-Rail Free Standing Mount

### PARTITION—RP RECESS PANEL

PK0355FDT15F150 #10-RP Front Partition with Coated Scratch Resistant Polycarbonate Sliding Window

### WINDOW BARRIERS

WK0514FDT15F150H	Horizontal Steel Bars
WK0595FDT15F150	Vented Scratch Resistant Polycarbonate - ( <i>Not Shown</i> )
WK0055FDT15F150	Rear Window Barrier—Steel

### DOOR GUARDS

DK0100FDT15F150 Impact Resistant TPO Polymer - (*Fits over OEM Door*)

### REAR CARGO STORAGE SYSTEM – (*Recessed Partition Required –Sold Separately*)

TK2068FDT15F150	Crew Cab Cargo Storage Box - <i>Pictured Inside</i>
TK1338FDT15F150	Cargo Deck with Drawer TransMax

